

Signal lights  
Series SL-x-TRIO-RT  
Series SL-x-TRIO-RT IOLINK




Multicolor

Full metal housing

Self-diagnosis

Configurable flashing frequency



 **IO-Link**

# Signal lights

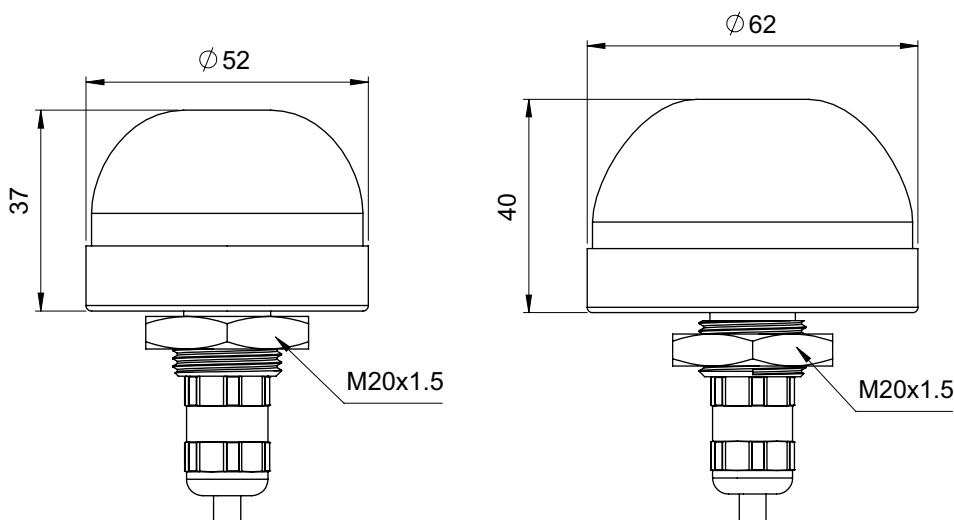
## Series SL-x-TRIO-RT


Distinctive characteristics of the **SL-x-TRIO RT** signal light series are the low installation height with simultaneously homogeneous light in four signal colors, as well as the robust and high-quality aluminium housing available in two diameters of 52 mm and 62 mm.

The number of possible applications benefits from their individual design and their adherence with technical standards for industrial environments.

### TECHNICAL DATA

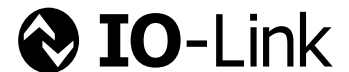
- Operating voltage 21–27 V DC
- Robust aluminium housing
- Shock-resistant polycarbonate diffuser
- Four signal colors in one device: Red / Yellow / Green / Blue
- Homogeneous light-emitting surface
- Integrated overcurrent and temperature protection
- Integrated reverse polarity protection
- IP 67 protection class, protection class 3



Type	Part no.	Power consumption Color Red / Yellow / Green / Blue (mA)	Dimensions Ø x H (mm)	GTIN / EAN
Version with 5 m PVC / PVC cable or M12 connector 				
SL-50-TRIO-RT LC / SL-50-TRIO-RT M12	11339 / 11340	40 / 80 / 40 / 40	52 x 37	4262388142802 / 4262388142819
SL-60-TRIO-RT LC / SL-60-TRIO-RT M12	11341 / 11342	80 / 160 / 80 / 80	62 x 40	4262388142826 / 4262388142833

# Signal lights

## Series SL-x-TRIO-RT IOLINK



Distinctive characteristics of the **SL-x-TRIO-RT IOLINK** signal light series are the low installation height with simultaneous homogeneous display of a wide range of colors (24-bit color depth), as well as the robust and high-quality aluminium housing available in two diameters of 52 mm and 62 mm.

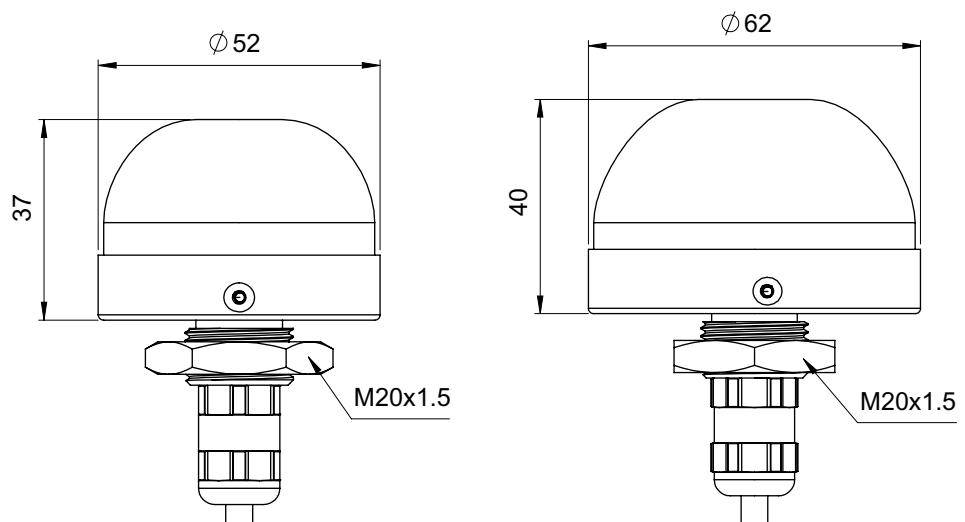
The number of possible applications benefits from their individual design and their adherence with technical standards for industrial environments.

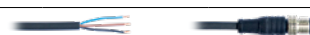
With an **IO link interface**, these intelligent signal lights ensure that you know how your transducer is functioning at all times. Conventional manual function tests (lamp tests) are dispensed with.

In addition, you can parameterise these signal lights with **signal functions (flashing, flashing frequency, flash, etc.)** at any time via the IO link interface.

### TECHNICAL DATA

- Operating voltage 20–30 V DC
- IO link interface COM 2
- Connection with 3 m PVC / PVC cable or M12 connector
- Shock-resistant polycarbonate diffuser for homogeneous signal surface
- High shock resistance: No internal oscillators and inductances sensitive to shock
- Integrated LED current and buzzer current monitor with error event output
- Parameterisable via IO link:
  - 24-bit RGB color table
  - Permanent function, flashing frequency and interpulse period, dimming, signal color
  - Dimming 0–100%
- Temperature monitoring
- Protection class IP 67, protection class 3



Type	Part no.	Power consumption max. (mA)	Dimensions Ø x H (mm)	GTIN / EAN
Version with 3 m PVC / PVC cable or M12 connector 				
SL-50-TRIO-RT IOLINK LC / SL-50-TRIO-RT IOLINK M12	11371 / 11372	70	52 x 37	4262388143007 / 4262388143014
SL-60-TRIO-RT IOLINK LC / SL-60-TRIO-RT IOLINK M12	11373 / 11374	130	62 x 40	4262388143021 / 4262388143038